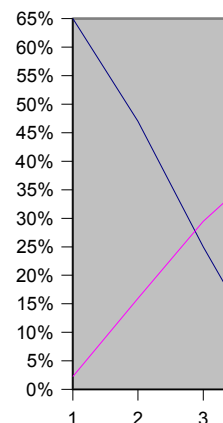


Tabelle1

Load test for oracle service name resolution

TNSNAMES	"Clients"	idle % client	Conn/s	idle % server
	1	65%	6.3	-
	2	47%	14.2	-
	3	25%	22	-
	4	5%	28	-
	5	1%	33	-
	6	0%	35	-
	7	0%	37	-
	8	0%	39	-
	9	0%	41	-
	10	0%	39	-



OID	Client	"Clients"	idle % client	Conn/s	
(dev1)	Prod2	0	95%	-	
		1	75%	8.7	
		2	50%	16.8	
		3	35%	24.5	
		4	19%	31.4	
		5	5%	36	
	Srv03	6+1	6	1% 99%	39
		6+2	8	1% 81%	52
		6+4	10	1% 62%	66
		6+8	14	1% 38%	94
	Srv01	6+12	18	1% 5%	114
		6+12+1	19	1% 1%	115
		6+12+4	22	1% 1%	133
		6+12+6	24	1% 1%	135

OpenLDAP	"Clients"	idle % client	Conn/s
(ldapsrv, VM)	6+4+4	14 1% 20%	122
	6+8+6	20 1% 1%	131
	8+16+8	32 0% 0%	129

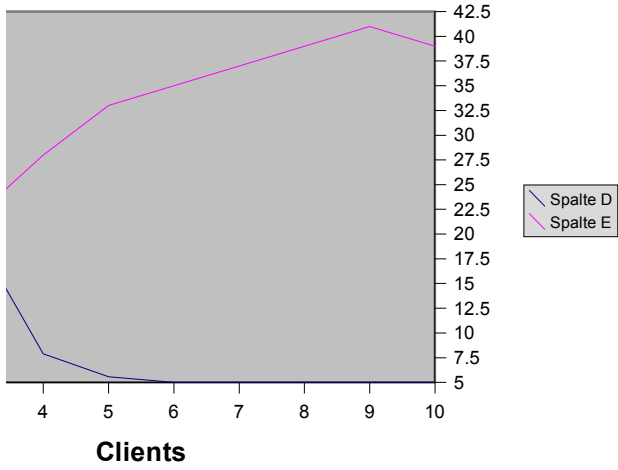
Verhalten analog OID

ONS	"Clients"	idle % client	Conn/s
(ons02)	0		
	1+1+1	3 72% 85%	30

40-60% Fehlerquote (unter hoher Last). Daher Versuch abgebrochen. Ist eine Produktionsmaschine!

Tabelle1

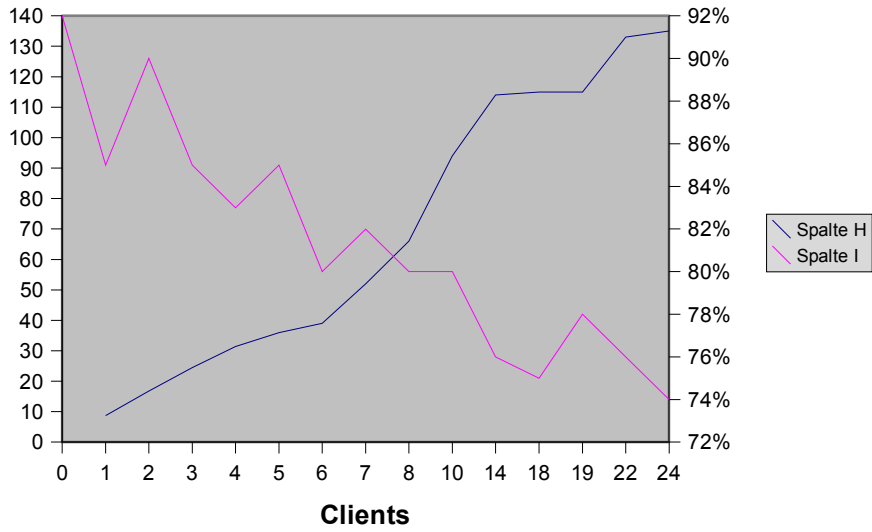
TNSNAMES



idle % server

- 92%
- 85%
- 90%
- 85%
- 83%
- 85%
- 80%
- 82%
- 80%
- 80%
- 76%
- 75%
- 78%
- 76%
- 74%

OID



idle % server

- 73%
- 70%
- 70%

idle % server

- 90%
- 86%